



Faster & Powerful

Adventurer 4 **Pro**



Adventurer 4 Pro retains the features of Adventurer Series, such as out-of-the-box design and easy printability, and further optimizes various functions to deliver higher-level printing quality. With the upgraded 9-point automatic leveling system, 2X faster printing speed, model cooling fans at both sides, and the support for various materials, it provides an efficient and easy-to-use experience for individuals, families and educational users.



9-point
Auto-Leveling



Standard Speed
100mm/s [2X faster]



PEI
Flexible Steel
Plate Platform



265°C Quick-release
Nozzle



50db
Quiet Printing



HEPA 13 Air Filter



Support PLA/ABS
PETG/PLA-CF
PETG-CF



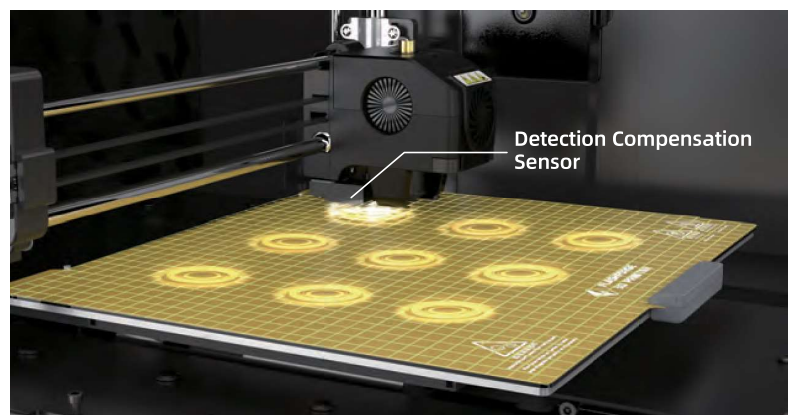
Online
Integrated Multi-machine
Management



Efficient and Handy Worry-free Printing

9-point Automatic Leveling

It adds the function of automatic leveling detection compensation of the extruder sensor; Through 9-point detection of the relative height between the nozzle and the platform, intelligent compensation is performed in the printing process to ensure neat and smooth first-layer line extrusion.





PEI Flexible Steel Plate Platform, Offering Quick Model Removal

Without the use of tools, the model can be removed in 1 second through the bending platform. The build platform adopts PEI coating with strong adhesion, which prevents the first layer from warping; The bottom surface is more delicate and smooth.

2X Faster
Printing Speed

200mm/s
Maximum Printing Speed

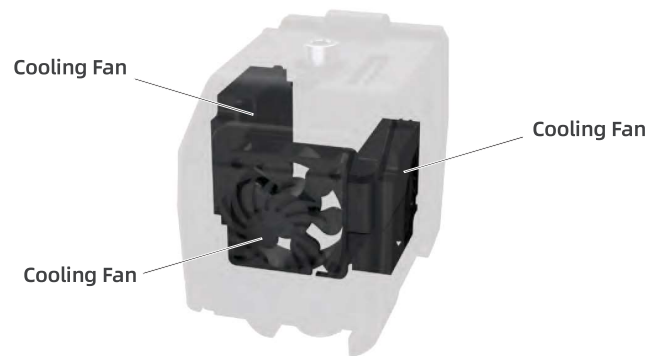
63%
Printing time shortened



All-round Upgrade Superior Surface Quality

Brand-new Extruder Fan Structure

The extruder is equipped with 3 fans to control the cooling wind speed. The dual ducts achieve the rapid cooling of the models, offering better surface finish.



265°C Copper Nozzle & Hardened Nozzle

The standard 0.4mm-265°C copper nozzle with great thermal conductivity matches fast printing; The upgrade of internal thermal conductivity ensures the model quality under high-speed printing. An optional 0.6mm high-strength nozzle with wear-resistant features supports long time printing of carbon fiber materials.

Parameters

Extruder Quantity	1
Printing Precision	±0.1mm [Testing based on 100mm cubes]
Build Volume	220 x 200 x 250mm
Nozzle Diameter	0.4mm [Default] [0.6/0.3mm Optional]
Nozzle Type	High-strength nozzle / Copper Nozzle
Printing Speed	Standard Speed 100mm/s; Maximum Speed 200 mm/s
Maximum Extruder Temperature	265 °C
Maximum Platform Temperature	110 °C
Supported Filament	ABS / PLA / PETG / Silk / PLA-CF / PETG-CF
Power Supply	AC100-240V / DC 24V / 13.3A, 320W
Equipment Dimensions	500[L] x 470[W] x 540[H] mm
Package Dimensions	580[L] x 570[W] x 630[H] mm
Slicing Software	FlashPrint
Connectivity	USB Flash Drive / Wi-Fi
Certification	CE / FCC / RoHS
Operating Ambient Temp.	15-30 °C
Leveling	Auto-leveling [9-point leveling]
Air Filter Net	HEPA 13
Flexible & Removable Build Plate	PEI Steel Plate
Other Features	<input checked="" type="checkbox"/> Filament Run-out Reminder <input checked="" type="checkbox"/> Camera <input checked="" type="checkbox"/> Power Loss Recovery <input checked="" type="checkbox"/> Quiet Printing